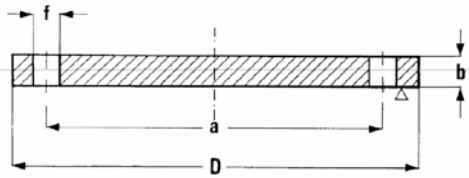


FLANGE EN EN FLANGES

05A PN6

FLANGE CIECHE PN 6 PN 6 BLIND FLANGES



TIPO 05A

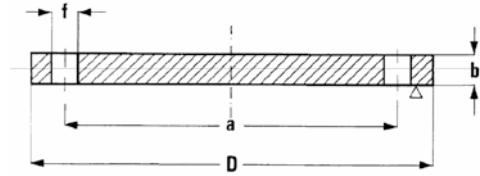
SIZE		a	D	b	f	VITI	N. FORI	Kg
DN	IN							
25	1"	75	100	14	11	M10	4	0,82
32	1" 1/4	90	120	14	14	M12	4	1,17
40	1" 1/2	100	130	14	14	M12	4	1,39
50	2"	110	140	14	14	M12	4	1,62
65	2" 1/2	130	160	14	14	M12	4	2,14
80	3"	150	190	16	18	M16	4	3,43
100	4"	170	210	16	18	M16	4	4,22
125	5"	200	240	18	18	M16	8	6,11
150	6"	225	265	18	18	M16	8	7,51
200	8"	280	320	20	18	M16	8	12,30
250	10"	335	375	22	18	M16	12	18,50
300	12"	395	440	22	22	M20	12	25,50
350	14"	445	490	22	22	M20	12	31,80
400	16"	495	540	22	22	M20	16	38,50

ITEM	COMPONENTI PART NAME	MATERIALI MATERIALS
1	Corpo Body	Acciaio al carbonio S235JR/P245GH Carbon steel S235JR/P245GH

FLANGE EN EN FLANGES

05A PN10

FLANGE CIECHE PN 10 PN 10 BLIND FLANGES



TIPO 05A

SIZE		a	D	b	f	VITI	N. FORI	Kg
DN	IN							
80	3"	160	200	20	18	M16	*8	4,61
200	8"	295	340	24	22	M20	8	16,50
250	10"	350	395	24	22	M20	12	24,10
300	12"	400	445	26	22	M20	12	30,80
350	14"	460	505	26	22	M20	16	39,60
400	16"	515	565	26	26	M24	16	49,40

* A richiesta possono essere fornite con 4 fori

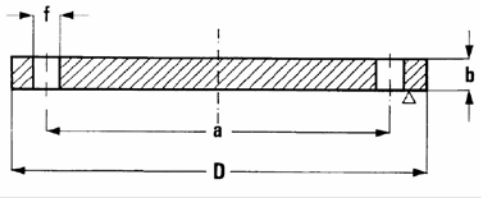
* 4 holes on request

ITEM	COMPONENTI PART NAME	MATERIALI MATERIALS
1	Corpo Body	Acciaio al carbonio S235JR/P245GH Carbon steel S235JR/P245GH

FLANGE EN EN FLANGES

05A PN16

FLANGE CIECHE PN 16 PN 16 BLIND FLANGES



TIPO 05A

ITEM	COMPONENTI PART NAME	MATERIALI MATERIALS
1	Corpo Body	Acciaio al carbonio S235JR/P245GH Carbon steel S235JR/P245GH

SIZE		a	D	b	f	VITI	N. FORI	Kg
DN	IN							
15	1/2"	65	95	16	14	M12	4	0,71
20	3/4"	75	105	18	14	M12	4	1,01
25	1"	85	115	18	14	M12	4	1,22
32	1" 1/4	100	140	18	18	M16	4	1,80
40	1" 1/2	110	150	18	18	M16	4	2,09
50	2"	125	165	18	18	M16	4	2,87
65	2" 1/2	145	185	18	18	M16	*8	3,65
80	3"	160	200	20	18	M16	8	4,61
100	4"	180	220	20	18	M16	8	5,65
125	5"	210	250	22	18	M16	8	8,12
150	6"	240	285	22	22	M20	8	10,50
200	8"	295	340	24	22	M20	12	16,50
250	10"	355	405	26	26	M24	12	25,10
300	12"	410	460	28	26	M24	12	35,20
350	14"	470	520	30	26	M24	16	48,00
400	16"	525	580	32	30	M27	16	63,50

* A richiesta possono essere fornite con 4 fori

* 4 holes on request